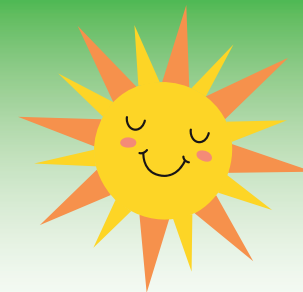




2021



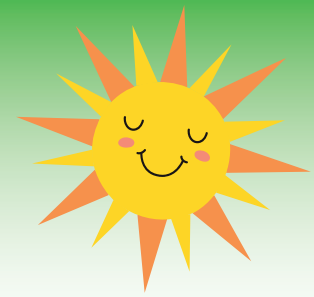
Solstråle 1.-3. trinn



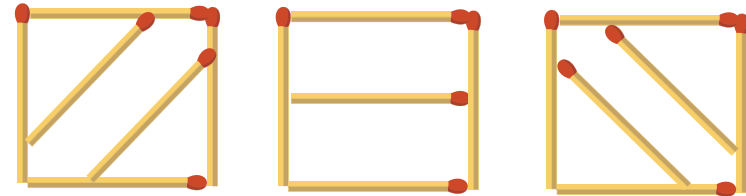
Løsningsord: _____



Oppgave 1

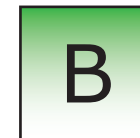
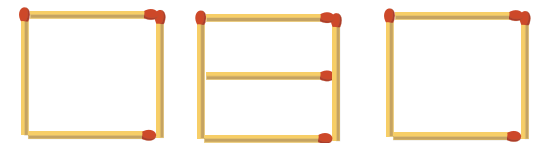
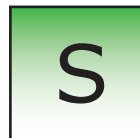
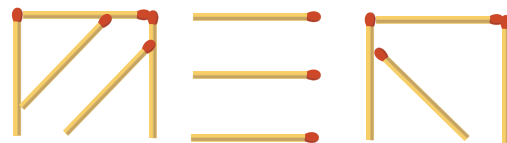
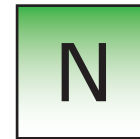
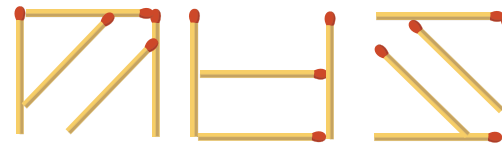
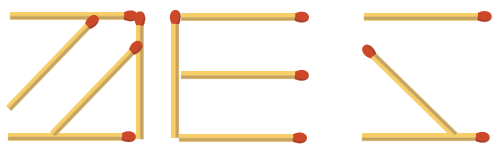


Knut laget tre figurer med fyrstikker.



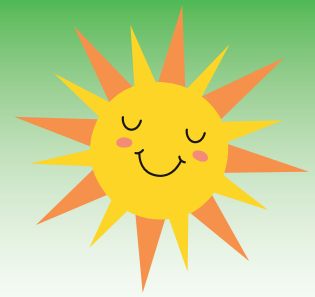
Han tok til sammen bort fire fyrstikker fra figurene.

Hvordan kan figurene se ut nå?





Oppgave 2



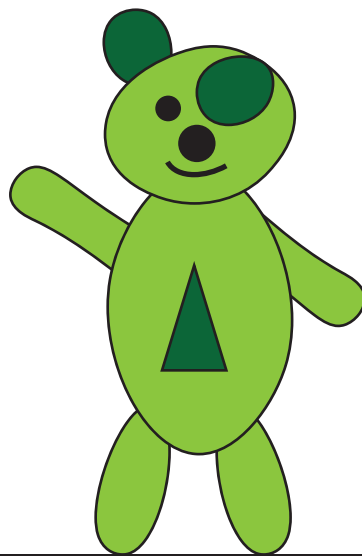
Silje har en teddybjørn. Han ser slik ut:

- det høyre øyet er skjult bak et øre
- venstre hånd peker oppover
- har en trekant på magen

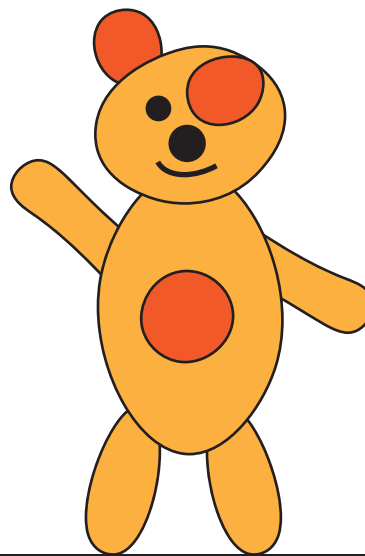
Hvilken teddybjørn er Silje sin?



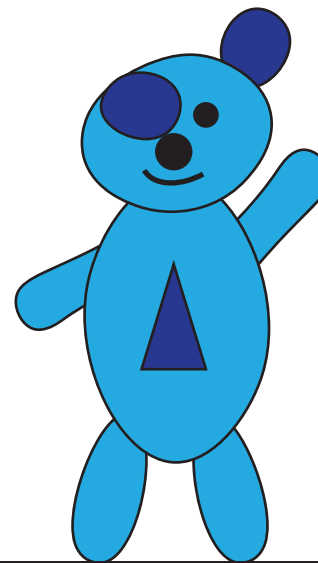
I



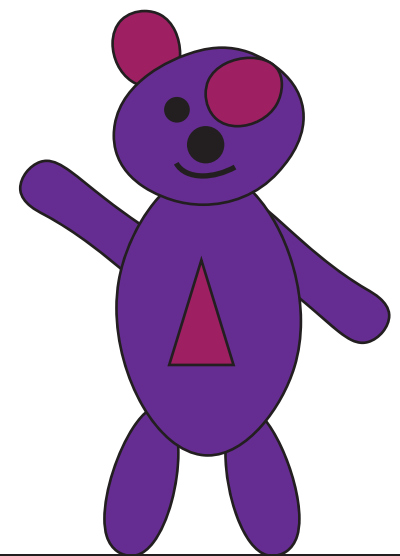
L



N



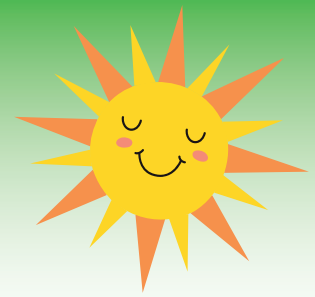
A



O

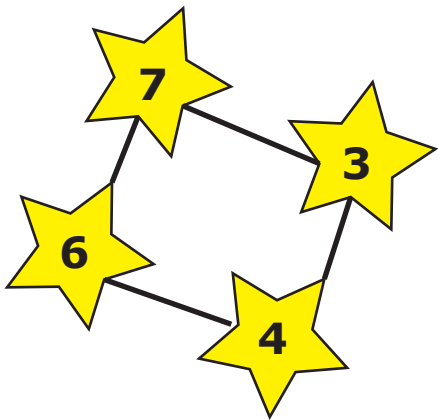


Oppgave 3

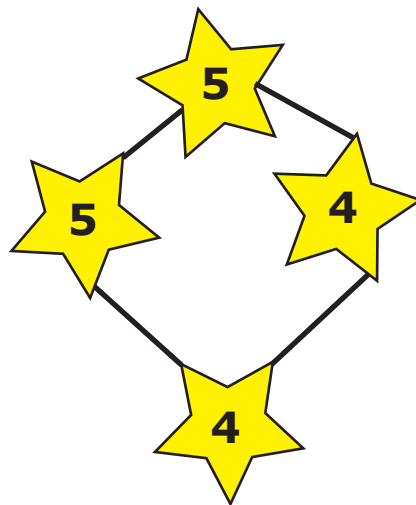


I stjernebildet "Spurveugle" har alle stjernene tall større enn 3 og summen er 20.

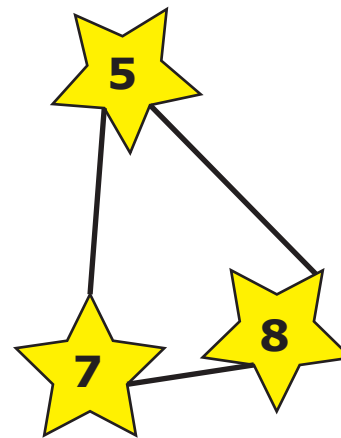
Hvordan ser stjernebildet Spurveugle ut?



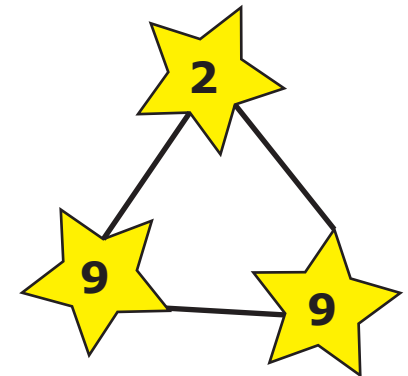
M



U



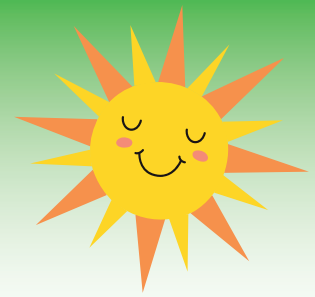
D



H



Oppgave 4




Noah koder ord ved å bruke rutenettet.

Eksempel:

Ordet FERIE har koden *C3 C4 D3 A1 D2*

Hvilket ord kodet Noah som *B4 C2 A3 D2*?



4	L	B	E	S
3	D	K	F	R
2	O	L	A	E
1	I	N	M	P
	A	B	C	D

KALD

G

BALL

N

LADE

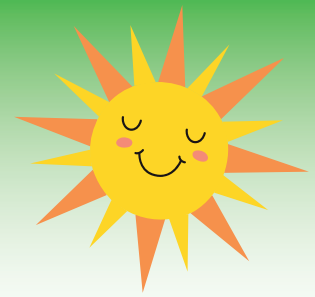
Ø

BADE

E



Oppgave 5



Hvilken leke veier mest?



F



V



M



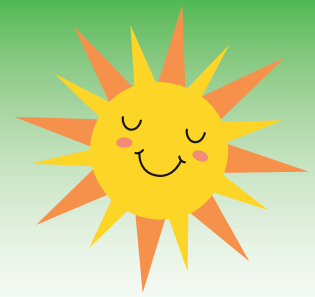
R



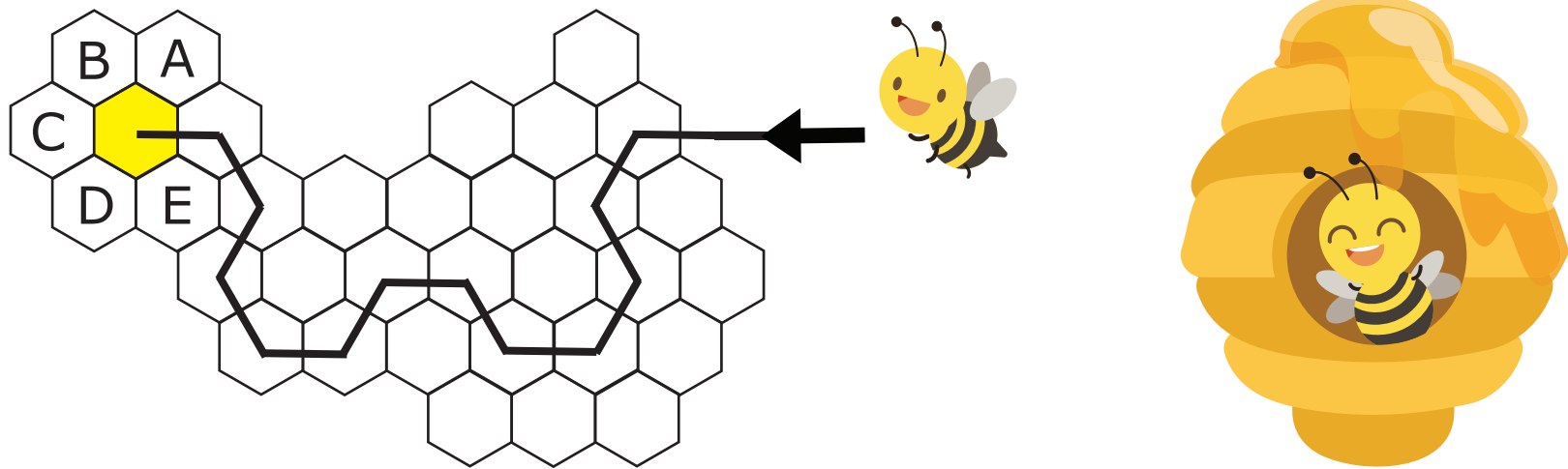
U



Oppgave 6



En bie beveger seg gjennom bikuben etter et bestemt mønster.



Til hvilken celle flytter bien seg etter den gule?

Celle A

R

Celle B

A

Celle C

I

Celle D

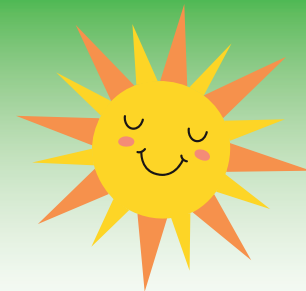
L

Celle E

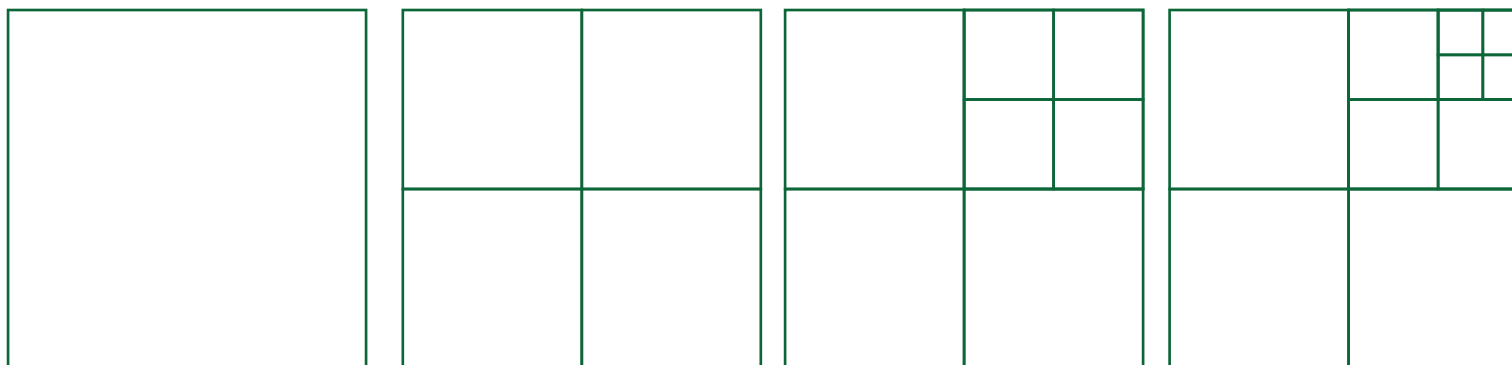
P



Oppgave 7



Trond og Olav lager et mønster med kvadratiske fliser. De første fire figurene består av 1, 4, 7 og 10 fliser.

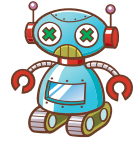
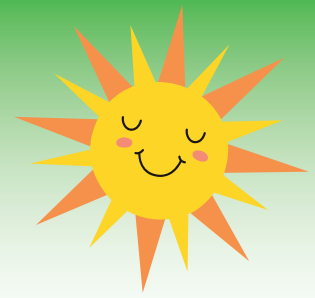


Hvor mange fliser har den sjette figuren om de fortsetter på samme måte?

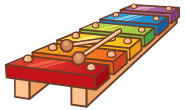
14	15	16	17
N	F	K	R



Oppgave 8



Markus har fem leker: robot, jo-jo, bamse, klokkespill og puslepill.

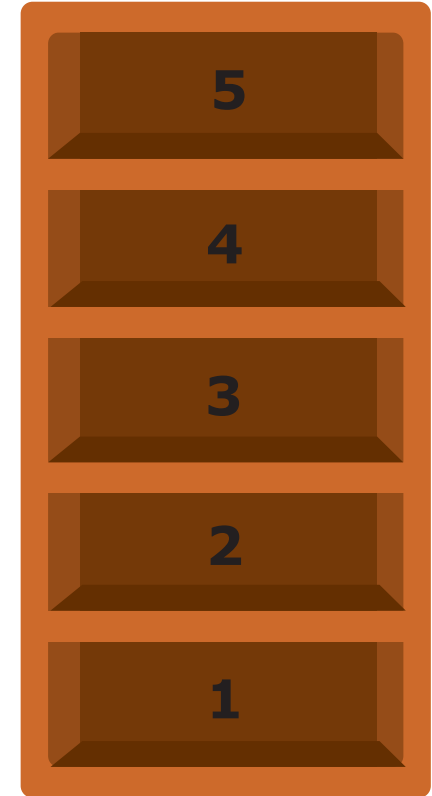


Han skal legge én leke i hver hylle.

Bamsen skal ligge høyere opp enn roboten, men lavere enn jo-jo'en.

Klokkespillet skal ligge i hylla rett over bamsen.

I hvilken hylle kan puslespillet ikke ligge?



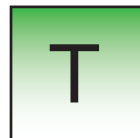
Hylle 1



Hylle 2



Hylle 3



Hylle 4



Hylle 5

