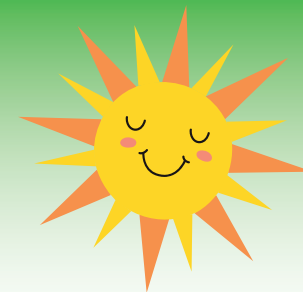




# 2022



## Solstråle 1.-3. trinn



Løsningsord: \_\_\_\_\_



Matematikk.org



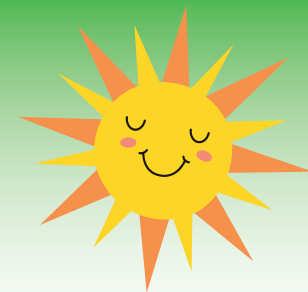
MATEMATIKKSENTERET  
Nasjonalt senter for matematikk i opplæringen



Norsk olje&gass

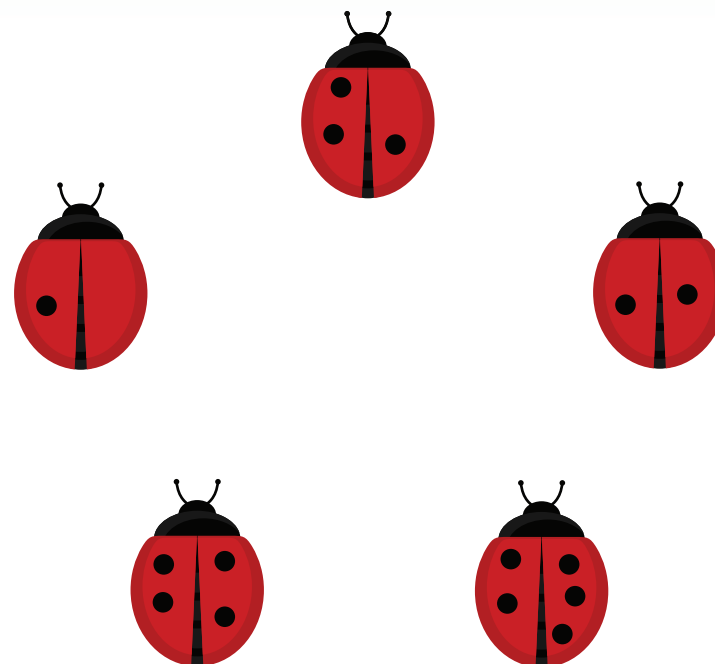


# Oppgåve 1

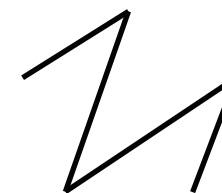
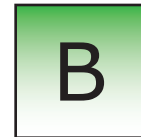
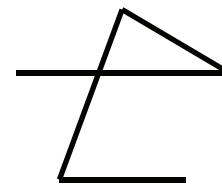
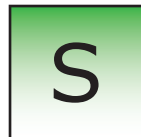
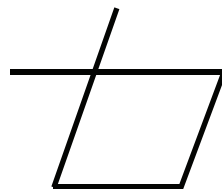
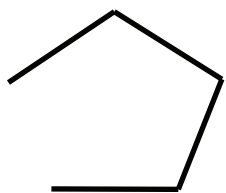
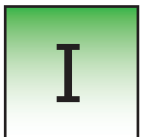
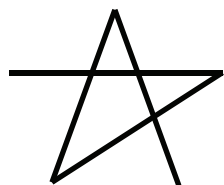


Teikn ein samanhengande strek mellom marihønene.

Start på marihøna som har éin prikk, og fortset i stigande rekkjefølgje etter talet på prikkar.

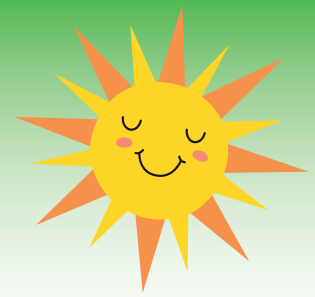


**Kva for ein figur får du?**





# Opppgåve 2



Rufus tenkjer på eit tal.

Talet er større enn 3, men mindre enn 15.  
Det er eit partal.  
Tallet kan delast i to like oddetal.

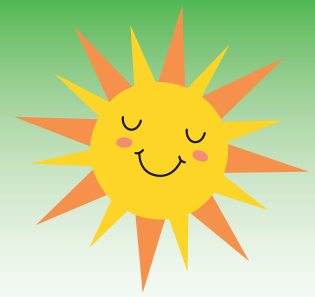


**Kva for eit tal tenkjer Rufus på?**

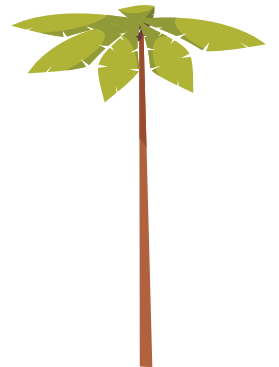
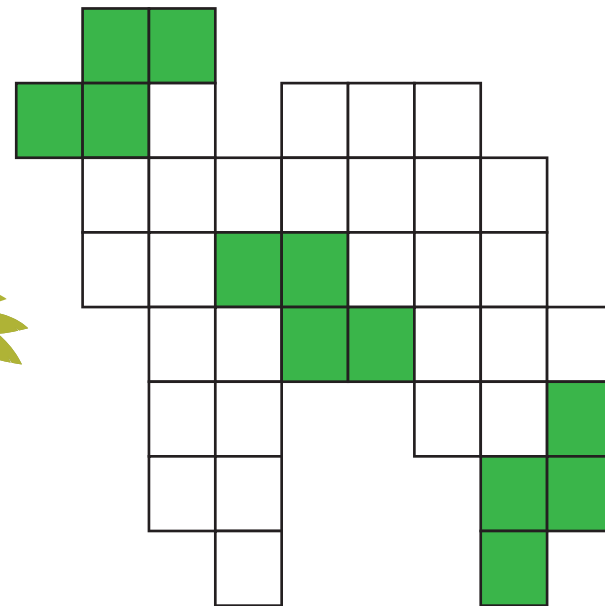
8	11	12	14
F	R	O	A



# Oppgåve 3



I eit puslespel er alle brikkene like.  
Du skal pusle ferdig kamelen.

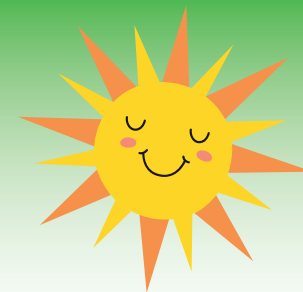


**Kor mange brikker treng du?**

5	6	7	8
P	G	D	Y

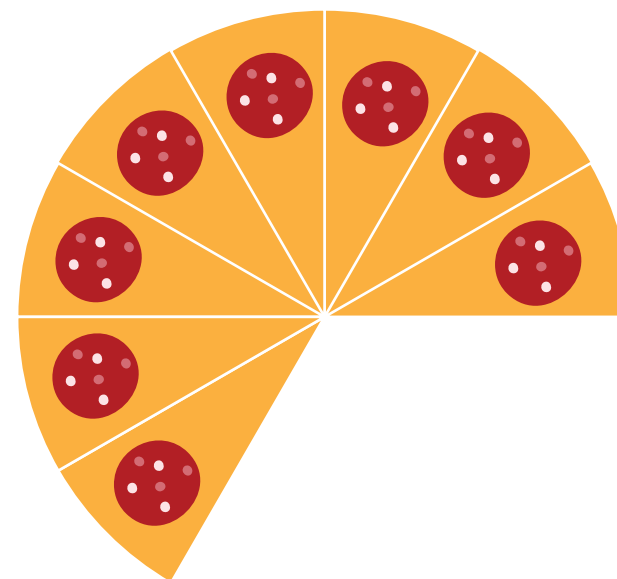


# Oppgåve 4



Lilly har laga ein pizza som ho har delt opp i like store stykke.

Ho åt nokre stykke til middag.

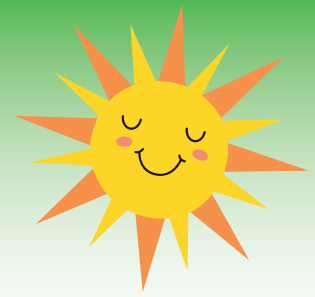


**Kor mange stykke har Lilly ete?**

1	4	5	8
H	E	I	N



# Oppgåve 5



På vektene ligg grøne og rosa kuler.  
Kuler med same farge veg like mykje.

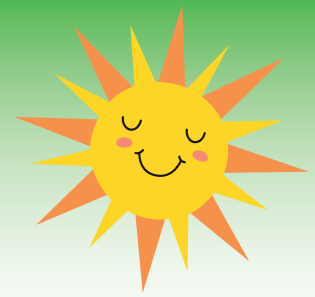


**Kor mykje veg ei rosa kule?**

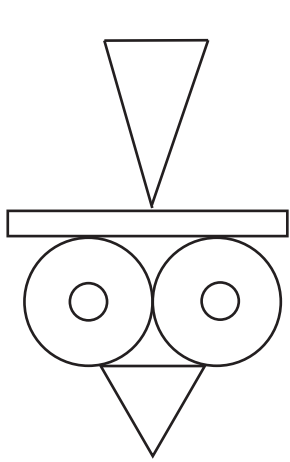
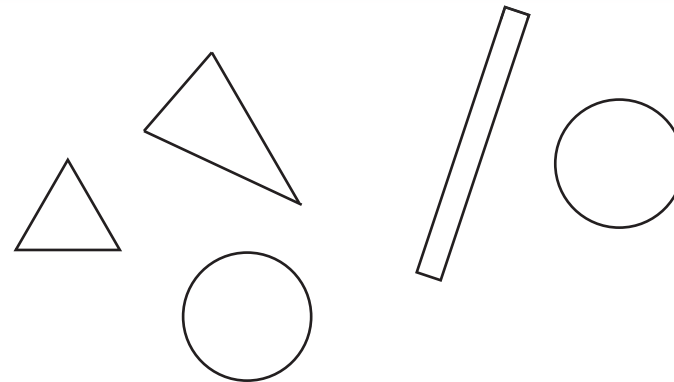
1 kg	3 kg	4 kg	7 kg
T	S	B	R



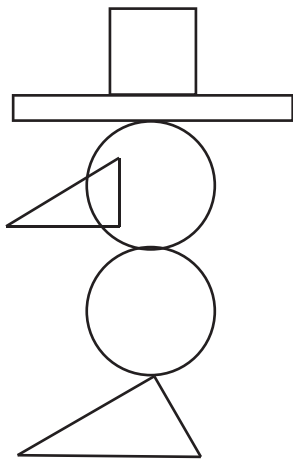
# Oppgåve 6



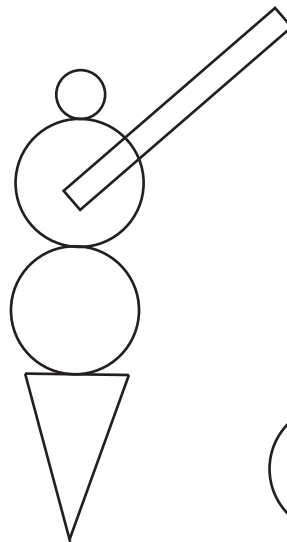
**Kva for ein figur kan du lage med desse fem formene?**



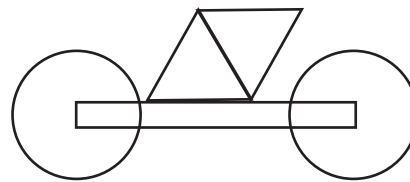
V



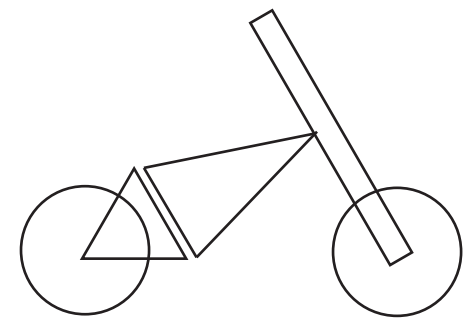
J



U



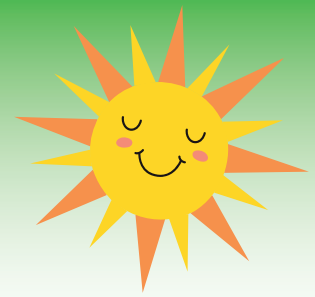
T



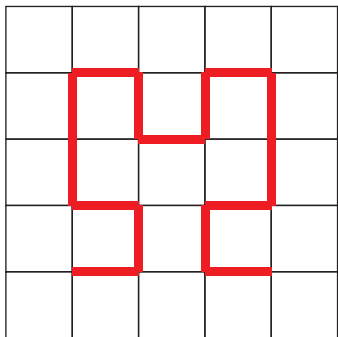
A



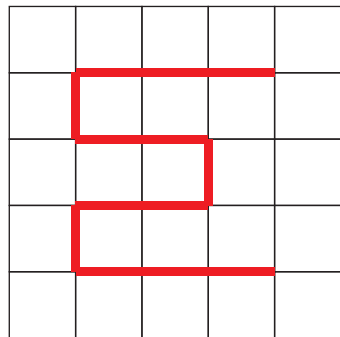
# Opppgåve 7



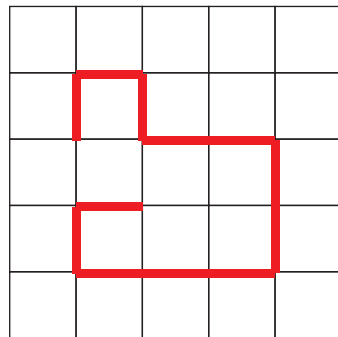
Kva for ein veg er lengst?



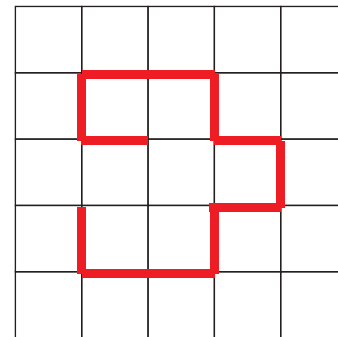
L



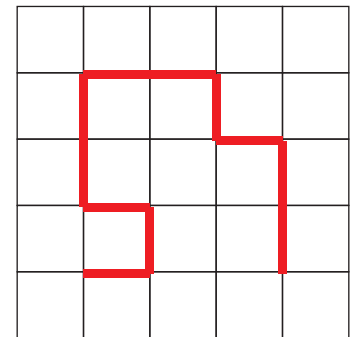
P



S



O

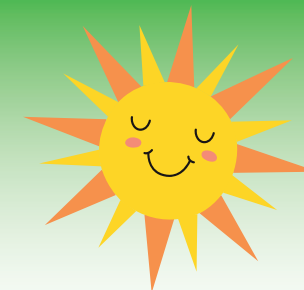


K





# Oppgåve 8



Koden C3 - C1 - A1 - D4  
gir ordet FUGL.



Vaskebjørnen lagar ein ny kode:  
D3 - B2 - D1 - A4

A	B	C	D	
G	S	U	N	1
E	U	M	A	2
T	K	F	H	3
D	O	T	L	4

**Kva ord gir koden?**

MUNN	HEST	HUND	HATT
N	M	L	G